

INTERIOR COLOUR  
COMBINATIONS



*'Colours are the smiles of Nature' – Leigh Hunt*

Colours give the essential character to any space, be it a living room or kitchen, bedroom or a lounge. Colours help to define a space before any other element of décor is chosen. They can also make a space appear large or small, relaxed or energetic - again hinting at what activity it invites the most. Long known for their power to influence moods and emotions, colours also help in making us feel healthy and energetic every day.



In this first of its kind guide from Berger Paints, we have illustrated how you can achieve striking effects in every room by using the right combinations. Here's where you'll find 7 unique combinations for each colour family to choose from. You can compare and see how the same room setting looks distinctly different with deeper, medium or lighter tones of the same colour family.



A total of 70 colour combinations are waiting to be discovered by you in these pages.

Wishing you a journey of fresh discoveries. Happy painting!



INTERIOR COLOUR  
COMBINATIONS

## Choosing colours made easy



PINK



ORANGE



RED



YELLOW



YELLOW - GREEN



VIOLET



BLUE



BLUE - GREEN



BROWN



GREY





"The very pink  
of perfection."

*Oliver Goldsmith, Playwright*





Manchester Mood  
8478



Fine Wine  
8109

Bare Necessity DW137





LIGHT



Devon Dawn  
8060



Berry Good  
8107

Devon Dawn 8060

MEDIUM



Glimpse of Spring  
7723



Euphoric Rose  
8135

Glimpse of Spring 7723



Fair Ivory  
8587



Morningside  
8059

Fair Ivory 8587



Citrus Sherbet  
7988



Wild Heather  
8087

Cottage White 8516



Soothing Spring 8748

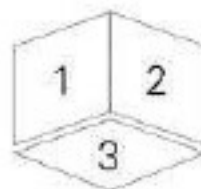


Fair Ivory 8587

# Pink

Pink is the soft side of Red. Pink can be subtle, subdued and refined or lively, hot and trendy. It's most accepted as unconditional love – nurturing, comforting and always there.

## How to use these combinations



The colours 1 and 2 form the basic 2-colour combination as shown in the pictures. These colours are recommended for adjacent surfaces like walls, beams, columns or niches. The 3rd colour is recommended for the rest of the room and/or the ceiling.



"It's amazing how it cheers  
one to shred oranges."

*D.H. Lawrence, Novelist*







Taupe View  
8769



Light My Fire  
AC114

Amberling OW125

LIGHT



Amber Moon  
7985



Baja Beach  
8497

Christi Cream 7980

MEDIUM



Moroccan Spice  
7999



Thunder Bay  
7368

Agad Parchment 8523



Thistle Down  
8004



Bashful Beige  
8002

Thistle Down 8004



Rose Queen  
8102



Tangelo Anna  
7971

Apricot Blush OW138



DARK



Pandoras Purple  
7143



Florida Orange  
7949

Proud Mary 7978



Orange Essence  
8009



Glowing Ember  
AC112

Apricot Blush OW138

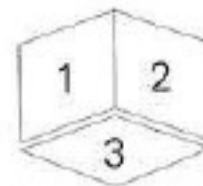


INTERIOR COLOUR  
COMBINATIONS

# Orange

Orange is a stimulating and energizing colour. Spicy orange can be warm and appetizing while peach tones can be welcoming and pleasing. Choose orange with any colour to bring energy and cheer in the air.

How to use these combinations



The colours 1 and 2 form the basic 2-colour combination as shown in the pictures. These colours are recommended for adjacent surfaces like walls, beams, columns or niches. The 3rd colour is recommended for the rest of the room and/or the ceiling.

The shades shown above are only a printed reference and may vary from the actual colour. Please refer the Berger Paints Colour Palette for actual shade reference.

"Red has guts...  
deep, strong dramatic."

*Garavani Valentino, Designer*







Light Roast  
8654



Red Red  
AC120

Country Cotton DW104



LIGHT



Path of Petals  
8035

Palace Gown  
OW146

Palace Gown OW146

MEDIUM



Fancy Nancy  
8054

Such a Peach  
7970

Such a Peach 7970





DARK

**BERGER** | INTERIOR COLOUR  
COMBINATIONS



Lipstick Pencil  
AC121



Pale pollen  
7889

Pale Ivory 7892



Sea Of Midnight  
7437



Autumn's Bronze  
8659

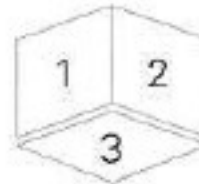
Almost Ivory OW156

# Red

Red is the most powerful colour.

Rich and intense, romantic and passionate or hot and flamboyant – red can make many statements. Chosen with any colour it always adds energy and excitement. Red never goes unnoticed.

How to use these combinations



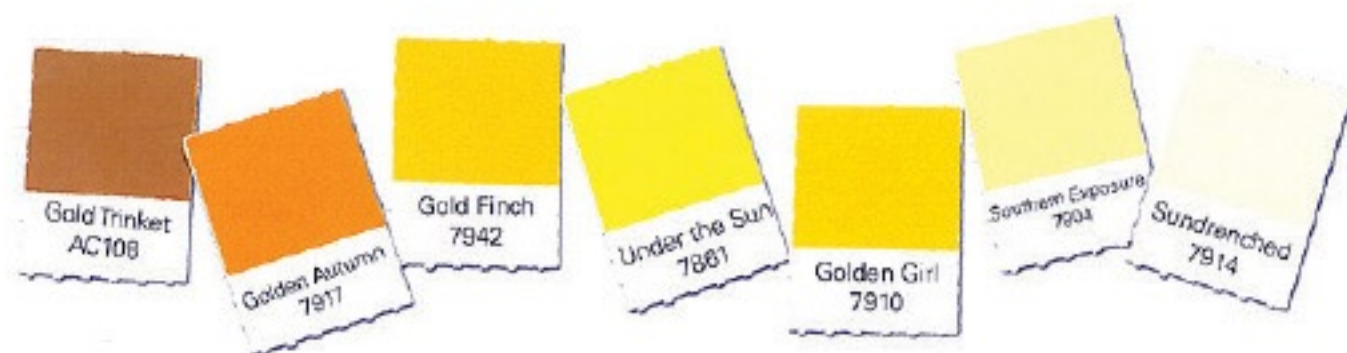
The colours 1 and 2 form the basic 2-colour combination as shown in the pictures. These colours are recommended for adjacent surfaces like walls, beams, columns or niches. The 3rd colour is recommended for the rest of the room and/or the ceiling.

The shades shown above are only a printed reference and may vary from the actual colour. Please refer the Berger Paints Colour Palette for actual shade reference.



“There are painters who transform the sun into a yellow spot, but there are others who, thanks to their art and intelligence, transform a yellow spot into the sun.”

*Pablo Picasso, Painter*







Golden Autumn  
7917



Utopia  
8752

Amazing Grace CW127

LIGHT

MEDIUM



Sundrenched  
7914



Banana Cream  
7850

Sundrenched 7914

Golden Girl  
7910



Clean Canvas  
7938

Clean Canvas 7938



Southern Exposure  
7904



Firefly Flicker  
7916

Firefly Flicker 7916

Gold Finch  
7942



Parma  
8642

Apricot Blue CW138



DARK



Gold Tinket  
AC108



Tuscany Hillside  
7781

Almond Sugar OW 128



Under the Sun  
7861



Gilded Vision  
AC110

Homemade Biscuit OW 128



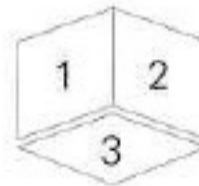
INTERIOR COLOUR  
COMBINATIONS

# Yellow

Yellow is the happiest colour in the spectrum associated with warmth, action and joy.

Paired with any other colour it marks the area as a 'day' space. Lighter shades are more accepted but use brighter ones for playful or graphic décors.

How to use these combinations



The colours 1 and 2 form the basic 2-colour combination as shown in the pictures. These colours are recommended for adjacent surfaces like walls, beams, columns or niches. The 3rd colour is recommended for the rest of the room and/or the ceiling.

The shades shown above are only a printed reference and may vary from the actual colour. Please refer the Berger Paints Colour Palette for actual shade reference.

“The winds will blow  
their own freshness into you,  
and the storms their energy,  
while cares will drop off  
like autumn leaves.”

*John Muir, Writer*







Ornamental Grass  
7837



Golden Mist  
8517

Cloud of Cream 8524

LIGHT



Plum Proud  
8219



Green Acres  
7730

Plum Proud 8219

MEDIUM



Drearry Space  
7364



Italian Olive  
7823

Pebble Bluff OW136



Burst of Spring  
7772



Southern Sand  
8780

Burst of Spring 7772



Alligator Alley  
7767



Gold Gleam  
7834

Gold Gleam 7834



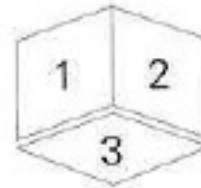


# Yellow-Green

Shining like the new leaves of spring, yellow - greens give a smacking fresh citrus taste with their presence. They make for striking combinations paired with any colour. Yellow - greens always bring smiles and good cheer in the air.



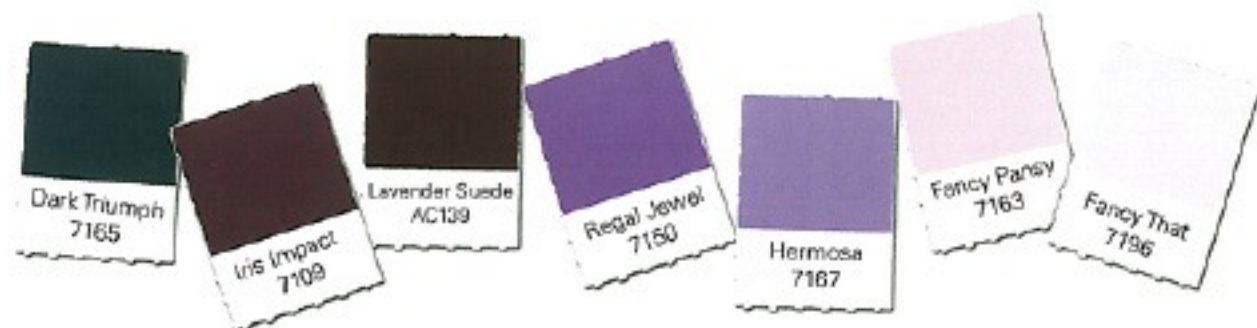
How to use these combinations



The colours 1 and 2 form the basic 2-colour combination as shown in the pictures. These colours are recommended for adjacent surfaces like walls, beams, columns or niches. The 3rd colour is recommended for the rest of the room and/or the ceiling.

"Forgiveness is the  
fragrance that the  
violet sheds on the  
heel that has  
crushed it."

*Mark Twain, Writer*







Soft Buckskin  
8577



Lavender Suede  
AC139

Whisper of White 8556

LIGHT

MEDIUM



Lilac Frost  
7148



Fancy Pansy  
7163

Lilac Frost 7148

Hermosa  
7167



Moroccan Spice  
7999

Lavender Splash 7164



Fancy That  
7196



Apricot Mousse  
7966

Fancy That 7196

Regal Jewel  
7150



Lakeside Pine  
7629

Daybreak Mood 8204





# Violet

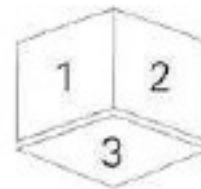
Violet is the colour of royalty.

It also has a mystical side.

Choose any shade of violet to infuse  
a sense of luxury in the air.

Violet also has a meditative quality  
that makes it a colour of clarity and foresight.

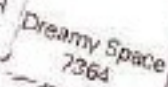
## How to use these combinations



The colours 1 and 2 form the basic 2-colour combination as shown in the pictures. These colours are recommended for adjacent surfaces like walls, beams, columns or niches. The 3rd colour is recommended for the rest of the room and/or the ceiling.

"I never get tired  
of the blue sky."

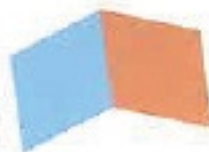
*Vincent Van Gogh, Painter*







Lupe's Lake  
7361



Sunset Mesa  
8015

African Ivory 8020

LIGHT



Inner Peace  
3443



Coral Beach  
7969

Apple White OW106

MEDIUM



Royal Regatta  
7247



Pandora's Purple  
7143

Pebble Bluff OW136



Hi Ho Silver  
8330



Prairie Day  
7331

Apple White OW106



Dreamy Space  
7364



Lupe's Lake  
7361

Dreamy Space 7364



DARK



INTERIOR COLOUR  
COMBINATIONS



# Blue

Blue is tranquility. It's the colour of openness and optimism. It complements beautifully with a wide range of colours creating a feeling of nurturing and ease. Create a calm and relaxed feel using light to medium range blues or a regal and dignified feel using the darker blues.

Midnight Interlude  
AC144



Persimmon  
8029

Milk Paint CW130



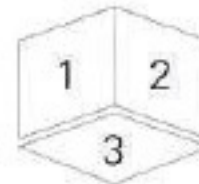
Baby Sprout  
AC160



Sea of Midnight  
7437

Pebble Bruff CW138

How to use these combinations:

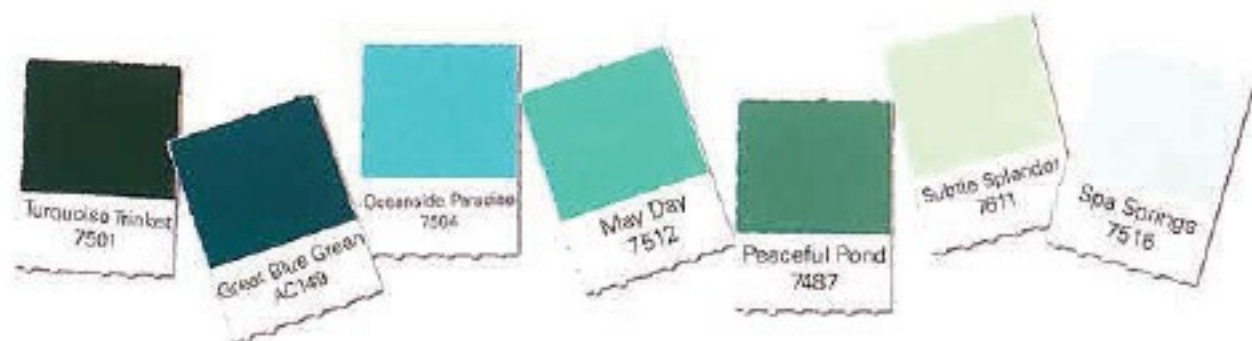


The colours 1 and 2 form the basic 2-colour combination as shown in the pictures. These colours are recommended for adjacent surfaces like walls, beams, columns or niches. The 3rd colour is recommended for the rest of the room and/or the ceiling.

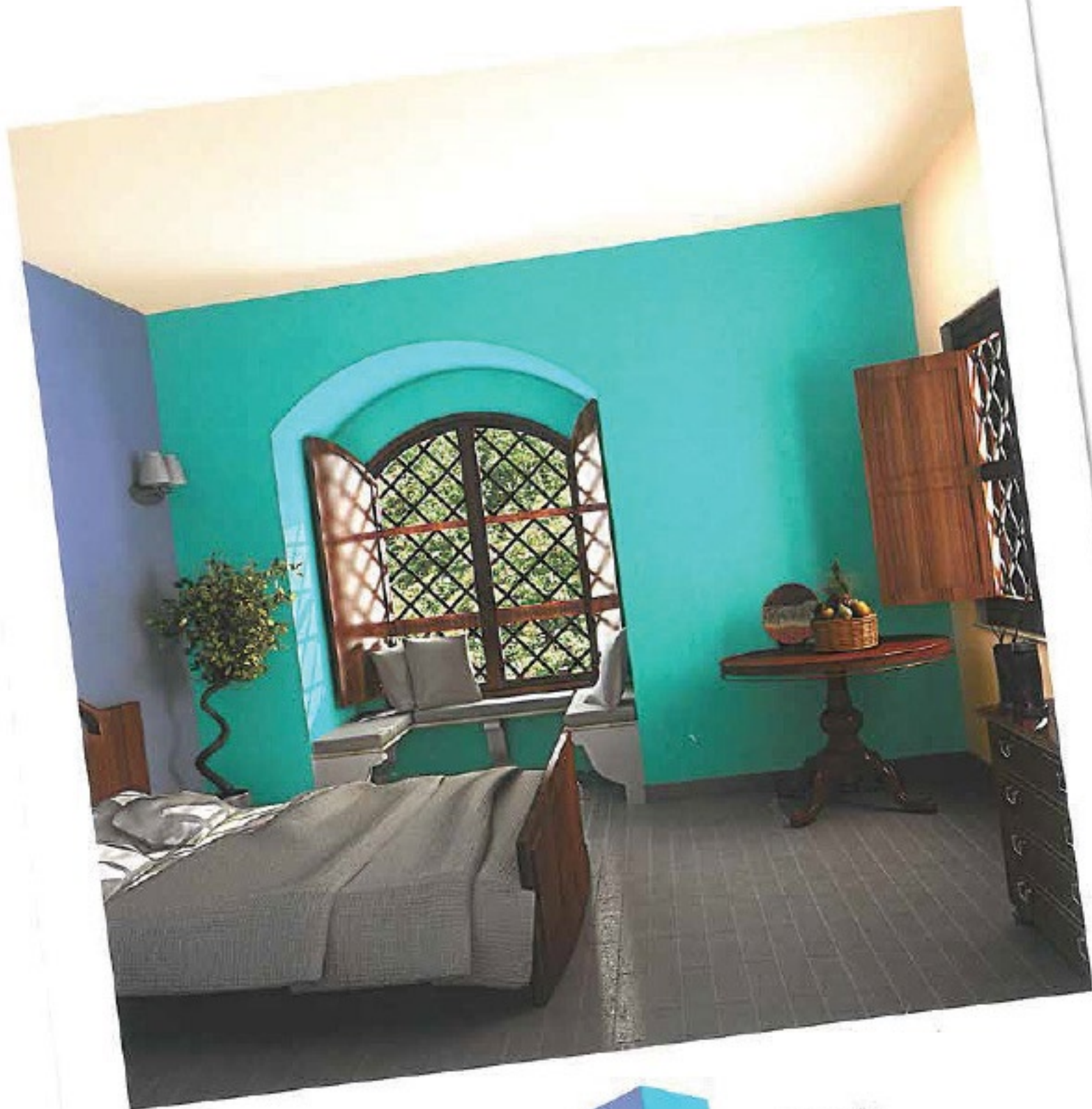
The shades shown above are only a printed reference and may vary from the actual colour. Please refer the Berger Paints Colour Palette for actual shade reference.

"I love the sea's sounds  
and the way  
it reflects the sky.  
The colours that shimmer  
across its surface  
are unbelievable."

*John Dyer, Poet*







South Port  
7271



Oceanside Paradise  
7504

Beige Daze OW132

LIGHT



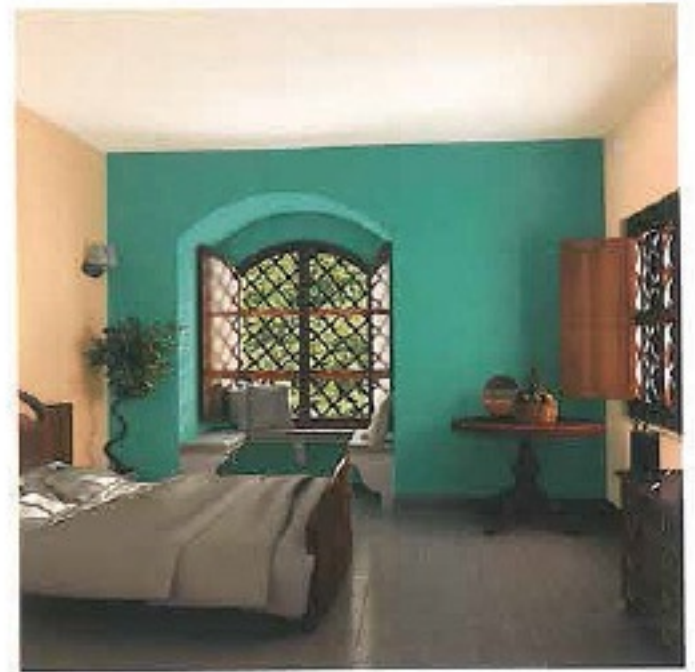
Mohican Mist  
8691



Subtle Splendor  
7611

Beige Bluff 8652

MEDIUM



Heritage Hills  
8554



Peaceful Pond  
7487

Heritage Hills 8554



Spa Springs  
7516



Spring Sonnet  
7667

Spring Sonnet 7667



The Outback  
7879



May Day  
7512

Sprinkled with Summer 7923



DARK



INTERIOR COLOUR COMBINATIONS

# Blue-Green

Blue - greens bring the cool calm waters of a tropical beach closer home. Like flowers in nature, these colour schemes enhance any setting and create a serene and stress-free feeling.



Brookside  
7455



Turquoise Trinket  
7501

Aurora Splendor OW117



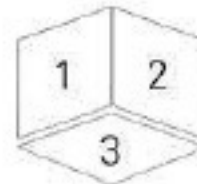
Western Pursuit  
8581



Great Blue Green  
AC149

Organic Cotton 8515

How to use these combinations.



The colours 1 and 2 form the basic 2-colour combination as shown in the pictures. These colours are recommended for adjacent surfaces like walls, beams, columns or niches. The 3rd colour is recommended for the rest of the room and/or the ceiling.

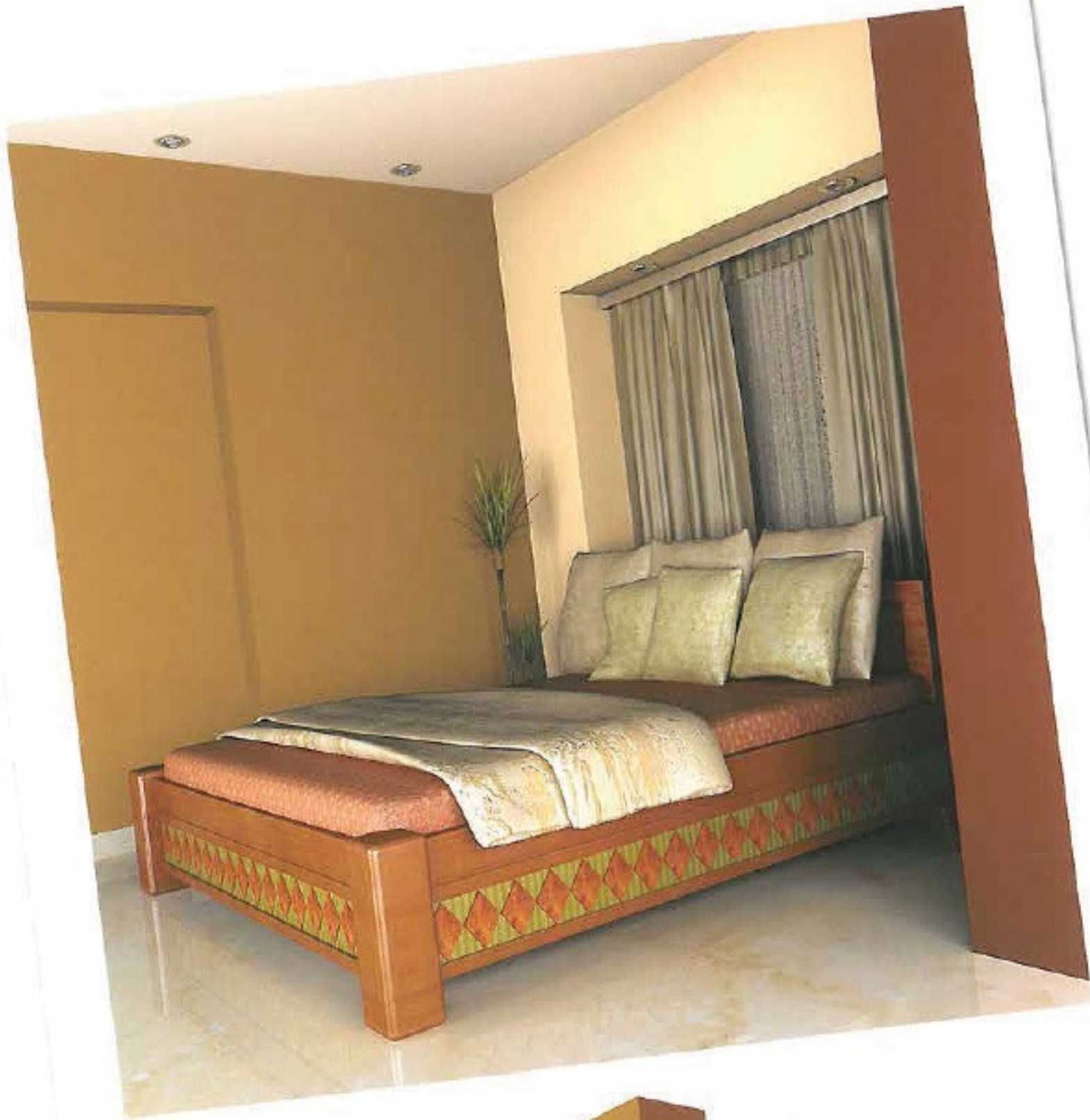
The shades shown above are only a printed reference and may vary from the actual colour. Please refer the Berger Paints Colour Palette for actual shade reference.

"The sparrows are preparing for winter, each one dressed in a plain brown coat and singing a cheerful song."

*Charles Kuralt, Writer & Journalist*







Golden Prairie  
8518



Old Brick  
8613

Aged Parchment 8523

LIGHT



Pale Portabella  
8513



Organic Cotton  
8515

Organic Cotton 8515

MEDIUM



Mocha Café  
8656



Fashion Ridge  
8687

Paper Blanc CW157



Baby Aqua  
7507



Julesberg  
8563

Balsam Brown 8520



Creased Khaki  
7928



Soft Buckskin  
8577

Beige Daze CW132



# Brown

Brown can evoke as many moods as there are shades. It can be rich and sophisticated, warm and comforting or neutral and secure. Chosen with any combination, brown always stays unaffected by passing fads and styles.



Western Pursuit  
8581



Aged Avocado  
7783

Arbor Field 7796



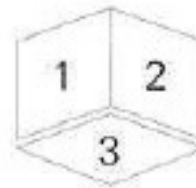
Coffee Connoisseur  
8767



Bergamot Orange  
2981

Beige Daze CW132

How to use these combinations



The colours 1 and 2 form the basic 2-colour combination as shown in the pictures. These colours are recommended for adjacent surfaces like walls, beams, columns or niches. The 3rd colour is recommended for the rest of the room and/or the ceiling.

"The colour of truth  
is grey."

*Andre Gide, Novelist*







Girgitta  
8232



Melita  
8111

Winged Angel 8100

LIGHT

MEDIUM



Snowflake Confetti  
8300



Wild Honey  
7922

Snowflake Confetti 8300

Girgitta  
8232



Green Apple Peels  
7726

Soft Fern 7732



Aegean Accent  
7474



Whispering Smoke  
8306

Whispering Smoke 8306

Lida Rose  
8206



Wild Mushroom  
8472

iced Silver 8236




 In the Dark  
8245

 Laureate  
8705

Apple White DW106

# Grey

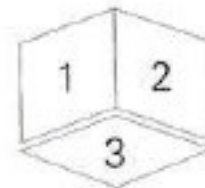
Grey is elegance. Grey brings sophistication and modernity with its presence. Use it with dark shades for bold artistic statements and with light shades for timeless elegance.


 Sunset Mesa  
8015

 Castle Dale  
8438

Coral Cloud 8019

How to use these combinations



The colours 1 and 2 form the basic 2-colour combination as shown in the pictures. These colours are recommended for adjacent surfaces like walls, beams, columns or niches. The 3rd colour is recommended for the rest of the room and/or the ceiling.



Grey

"Mere colour, unspoiled by meaning and unallied with definite form, can speak to the soul in a thousand different ways."

*Oscar Wilde, Playwright*



Blue



Red



Blue-Green





Yellow



Green



Brown



Violet



Orange



Pink

Choosing colours made easy



## **roÿale Luxury Interior Emulsion**

With its soft touch and smooth sheen, Berger roÿale brings walls to life with the elegance and feel of exotic fabrics. Combined with the traditional attributes of a superior paint, virtually odourless and specially formulated with carefully selected raw materials, Berger roÿale incorporates Dura-Tuf Technology, making it tough to stain, easy to clean and highly resistant to fungus and algae, whilst maintaining its beauty for 7 years.



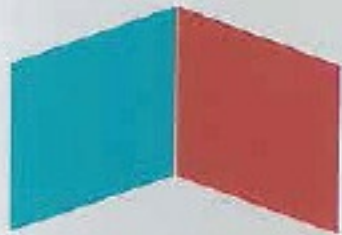
## **roÿale Water-based Luxury Gloss Enamel**

For centuries, oil-based enamel has been the professional painters' only choice for painting and trimming wood and metal. Technologically advanced Berger roÿale Water-Based Luxury Gloss Enamel, has now changed the oil paint landscape forever, with comparable performance in flow, levelling, adhesion, print, block and abrasion resistance. As a water-borne formulation, Berger roÿale Water-Based Luxury Gloss Enamel is non-yellowing, low-odour, recoats in 1 hour, and is lead and mercury-free. These unique properties make Berger roÿale Luxury Gloss Enamel, the ideal environmentally-friendly alternative to oil-paint.



For more information, log on to [www.bergercaribbean.com](http://www.bergercaribbean.com)





[www.bergercaribbean.com](http://www.bergercaribbean.com)

 [facebook.com/BergerCaribbean](https://facebook.com/BergerCaribbean)

**BARBADOS: 1 (246) 425-9073 • JAMAICA: 1 (876) 923-6226 • TRINIDAD: 1 (868) 623-2231**

No part of this book may be reproduced or copied in any form or by any means (graphics, electronic or mechanical, including photocopying, recording, taping or information storage retrieval system) or reproduced in any disc, tape, perforated media or other information storage device, etc., without the written permission of Berger Paints (Caribbean) Ltd. All rights reserved.



**Berger Paints Barbados Ltd.**

Exmouth Gap, Brandons, St. Michael,  
Bridgetown, Barbados, W.I. BB12069  
Tel: +1-246-425-9073  
Fax: +1-246-228-0866  
Email: info@bergeronline.com

**Berger Paints Jamaica Ltd.**

256 Spanish Town Road,  
P.O. Box 8, Kingston 11, Jamaica  
Tel: +1-876-923-6226  
Fax: +1-876-923-5129  
Email: bergerja\_marketing@bergeronline.com

**Berger Paints Trinidad Ltd.**

P.O. Box 546, 11 Concessions Road,  
Sea Lots, Port Of Spain, Trinidad  
Tel: +1-868-623-2231  
Fax: +1-868-623-1682



[www.bergercaribbean.com](http://www.bergercaribbean.com)  [facebook.com/BergerCaribbean](https://facebook.com/BergerCaribbean)